

**E-Z LIFT
PLEATED SHADE
INSTALLATION
INSTRUCTIONS**

INSTALLING

1. Install mounting brackets (A) above top of window frame. Mount brackets approximately 3" in from corner of window frame.
NOTE: On shades 50" or wider use 3 mounting brackets
2. Install headrail (B) into mounting brackets by tilting front of headrail in an UP position. Slide hook of mounting bracket into groove of headrail. Then push back of headrail up, until it snaps into bracket.
3. Mount hold down brackets (D) below bottom of the window frame. Mount brackets the same width of bottomrail (C).
NOTE: Keep the tension even on both sides of shade or the shade will hang crooked.

IRVINE SHADE & DOOR'S PLEATED DAY/NITE SHADE AND NIGHT SHADE OFFERS THESE DISTINCT ADVANTAGES:

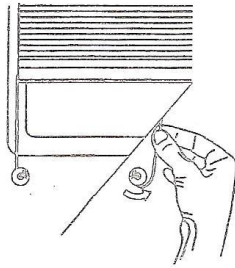
1. Top Quality Materials
2. Complete Color Coordination
3. Excellent Service
4. Competitive Prices

TENSION ADJUSTMENT FOR:
Constant Tension - Pleated Shades
Constant Tension - Mini Blinds

Proper tension is achieved by tightening the shade just enough to hold it's position in the window. NOTE: Do Not overtighten the shades. Overtightening will cause stiff operation and could cause product failure.

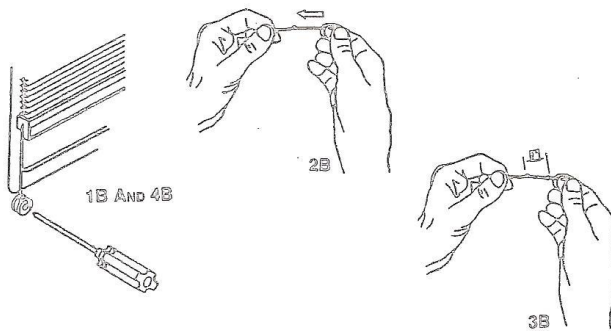


TIGHTENING METHODS



METHOD A:

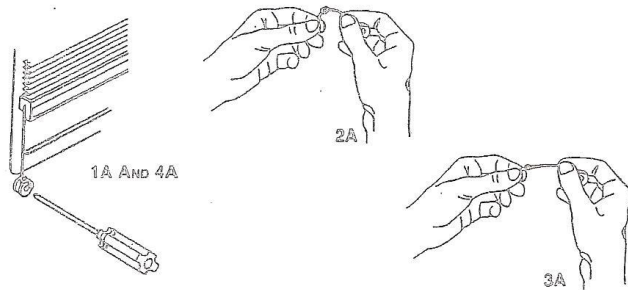
1. Wrap cord one time around each cord retainer spool.
2. Test shade for proper tension.
3. If shade will still too loose repeat step 1.



METHOD B:

1. Unscrew cord retainer spool from wall on one side.
2. Slide cord retainer spool approx. 2" up cords.
3. Tie a new knot approx. 1" from existing knot.
4. Screw cord retainer spool to wall.
5. Repeat steps 1-4 on opposite side cord retainer spool.

LOOSENING METHODS



METHOD A:

1. Unscrew cord retainer from wall on one side
2. Loosen Knot
3. Re-Tie knot approx. 1" toward end of cord.
4. Screw cord retainer spool to wall.
5. Repeat step 1-4 on opposite side cord retainer spool.

PLEATED DAY/NITE SHADE CARE INSTRUCTIONS

CLEANING: To clean pleated shade fabric of dust, use a soft attachment on a vacuum. To remove soil, clear Ivory dishwashing liquid mixed with water is recommended. To clean painted aluminum rails, use automotive starting fluid or Formula 409 cleaner.

OPERATION OF PLEATED DAY/NITE SHADES: It is important to raise and lower only one rail at a time when operating pleated Day/Nite Shades.
To Lower Shade: Using both hands, insert fingers into bottom rail opening and pull down day portion of shade only. Next, using both hands, insert finger into center rail opening and pull down nite portion of shade.

To Raise Shade: Using both hands, insert finger into center rail opening and lift up nite portion of shade only. Next, using both hands, insert fingers into bottom rail opening and lift up day portion of shade.