

Slow-Roll Shower Screen Installation Instructions



1) Peel/stick then screw shower screen cartridge to shower wall jamb. Secure with 2-#8 x 1 1/4 screws through endcap screw slots.



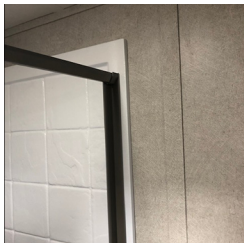
2) Measure bottom of opening. Cut bottom track 2 1/2" less than opening measurement. Insert track into shower screen end cap.



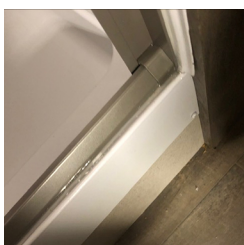
3) Insert bottom track into side rail end cap. Peel and stick side rail to wall jamb (NOTE: Swing peeled side rail onto wall jamb).



4) Slide round leadrail carrier into backside of top track. Insert top track into shower screen upper end cap.



5) Press top track into side rail end cap. Secure top track and side rail with #6 x 1/2" screw.



6) Caulk inside and outside left and right wall jamb. Caulk bottom threshold.

